



T105 R10 S32

Farm # 4844

Tract # 12124

Acre Summary

Saratoga

Legend

Total Acres 29.8

Total CRP 0

Cropland 21.71

May 10, 2011

2011 FSA Acreage Map

Scale: 1:4,800

- Restricted Use
- ▼ Limited Restrictions
- Exempt from Conservation Compliance Provisions
- CLU Field Boundary
- Tract Boundary
- Section Lines
- CRP Contracts

Acre Summaries reflect Common Land Unit data and are not reflective of parcel information. All information contained in this summary is for FSA business purposes only.



Minnesota  
 Winona  
 Report ID: FSA-156EZ

U.S. Department of Agriculture  
 Farm Service Agency  
 Abbreviated 156 Farm Record

FARM: 4844  
 Prepared: 12/21/11 11:10 AM  
 Crop Year: 2012  
 Page: 1 of 1

Operator Name: BERRY BRAYONNA & MITCH & SWENSON DON - JV  
 Farm Identifier: SA(32)  
 Recon Number: 2011 27169 98

Farms Associated with Operator:  
 1918, 3530, 3911, 4476, 4478, 4620

CRP Contract Number(s): None

Farmland	Cropland	DCP Cropland	WBP	WRP/EWP	CRP Cropland	GRP	Farm Status	Number of Tracts
29.8	21.7	21.7	0.0	0.0	0.0	0.0	Active	1
State Conservation	Other Conservation	Effective DCP Cropland	Double Cropped	NAP	MPL/FWP		FAV/WR History	ACRE Election
0.0	0.0	21.7	0.0	0.0	0.0		N	None

Crop	Base Acreage	CRP Reduction	CRP Pending	Direct Yield	CC Yield	CCC-505 CRP Reduction	PTPP Reduction
CORN	10.6	0.0	0.0	117	154	0.0	0.0
SOYBEANS	10.6	0.0	0.0	31	37	0.0	0.0
<b>Total Base Acres:</b>	21.2						

Tract Number: 12124 Description SA(32) FAV/WR History N  
 BIA Range Unit Number:  
 HEL Status: HEL: conservation system is being actively applied  
 Wetland Status: Wetland determinations not complete  
 WL Violations: None

Farmland	Cropland	DCP Cropland	WBP	WRP/EWP	CRP Cropland	GRP
29.8	21.7	21.7	0.0	0.0	0.0	0.0
State Conservation	Other Conservation	Effective DCP Cropland	Double Cropped	NAP	MPL/FWP	
0.0	0.0	21.7	0.0	0.0	0.0	

Crop	Base Acreage	Direct Yield	CC Yield	CRP Reduction	CRP Pending	CRP Yield	CCC-505 CRP Reduction	PTPP Reduction
CORN	10.6	117	154	0.0	0.0	0	0.0	0.0
SOYBEANS	10.6	31	37	0.0	0.0	0	0.0	0.0
<b>Total Base Acres:</b>	21.2							

Owners: JOHN W DECKER ROSALINDA DECKER  
 Other Producers: DON SWENSON MITCH BERRY  
 BRAYONNA BERRY

## Crop Productivity Index

Crop Productivity Index— Summary by Map Unit — Winona County, Minnesota (MN169)				
Map unit symbol	Map unit name	Rating	Acres in AOI	Percent of AOI
11D	Sogn silt loam, rocky, 6 to 30 percent slopes	6	0.2	0.5%
103B	Seaton silt loam, 3 to 6 percent slopes	85	2.2	5.9%
103C	Seaton silt loam, 6 to 12 percent slopes	71	11.5	30.5%
103D	Seaton silt loam, 12 to 20 percent slopes	62	16.3	43.4%
457G	Lacrescent silt loam, rocky, 45 to 70 percent slopes	1	0.4	0.9%
501D	NewGlarus silt loam, 12 to 20 percent slopes	45	0.2	0.5%
501E	NewGlarus silt loam, rocky, 12 to 30 percent slopes	6	4.1	11.0%
577	Newalbin silt loam, channeled	20	0.3	0.8%
832F	Lacrescent-Rock outcrop complex, 30 to 45 percent slopes	3	0.5	1.2%
1857	Eitzen silt loam, channeled	20	1.9	5.1%
W	Water	0	0.0	0.0%
<b>Totals for Area of Interest</b>			<b>37.5</b>	<b>100.0%</b>

### Description

Crop productivity index ratings provide a relative ranking of soils based on their potential for intensive crop production. An index can be used to rate the potential yield of one soil against that of another over a period of time. Ratings range from 0 to 100. The higher numbers indicate higher production potential. The rating is not crop specific.

When the soils are rated, the following assumptions are made: a) adequate management, b) natural weather conditions (no irrigation), c) artificial drainage where required, d) no frequent flooding on the lower lying soils, and e) no land leveling or terracing. Even though predicted average yields will change with time, the productivity indices are expected to remain relatively constant in relation to one another over time.

### Rating Options

*Aggregation Method:* Weighted Average

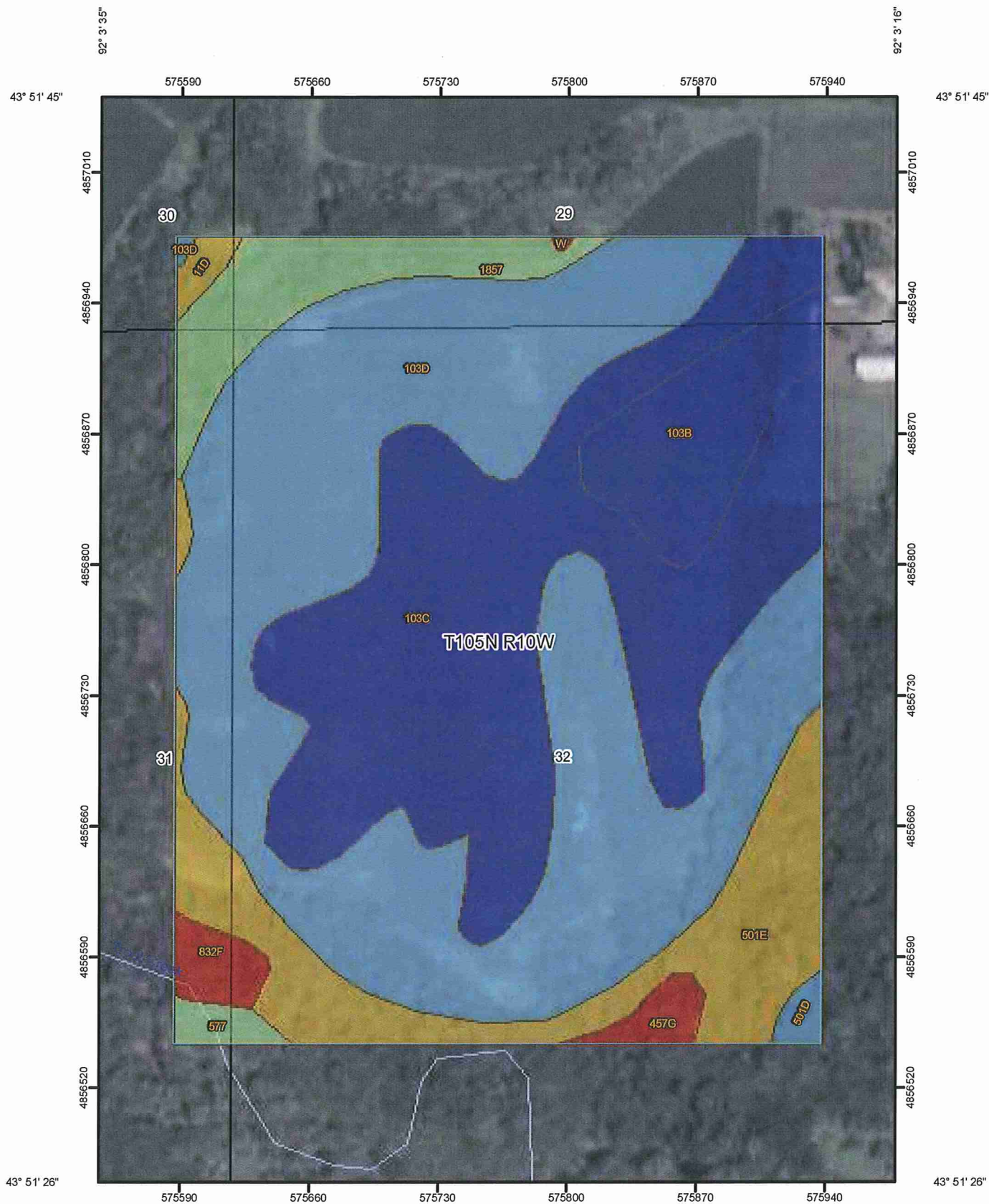
*Component Percent Cutoff:* None Specified

*Tie-break Rule:* Higher

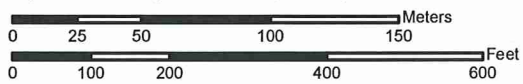
*Interpret Nulls as Zero:* Yes



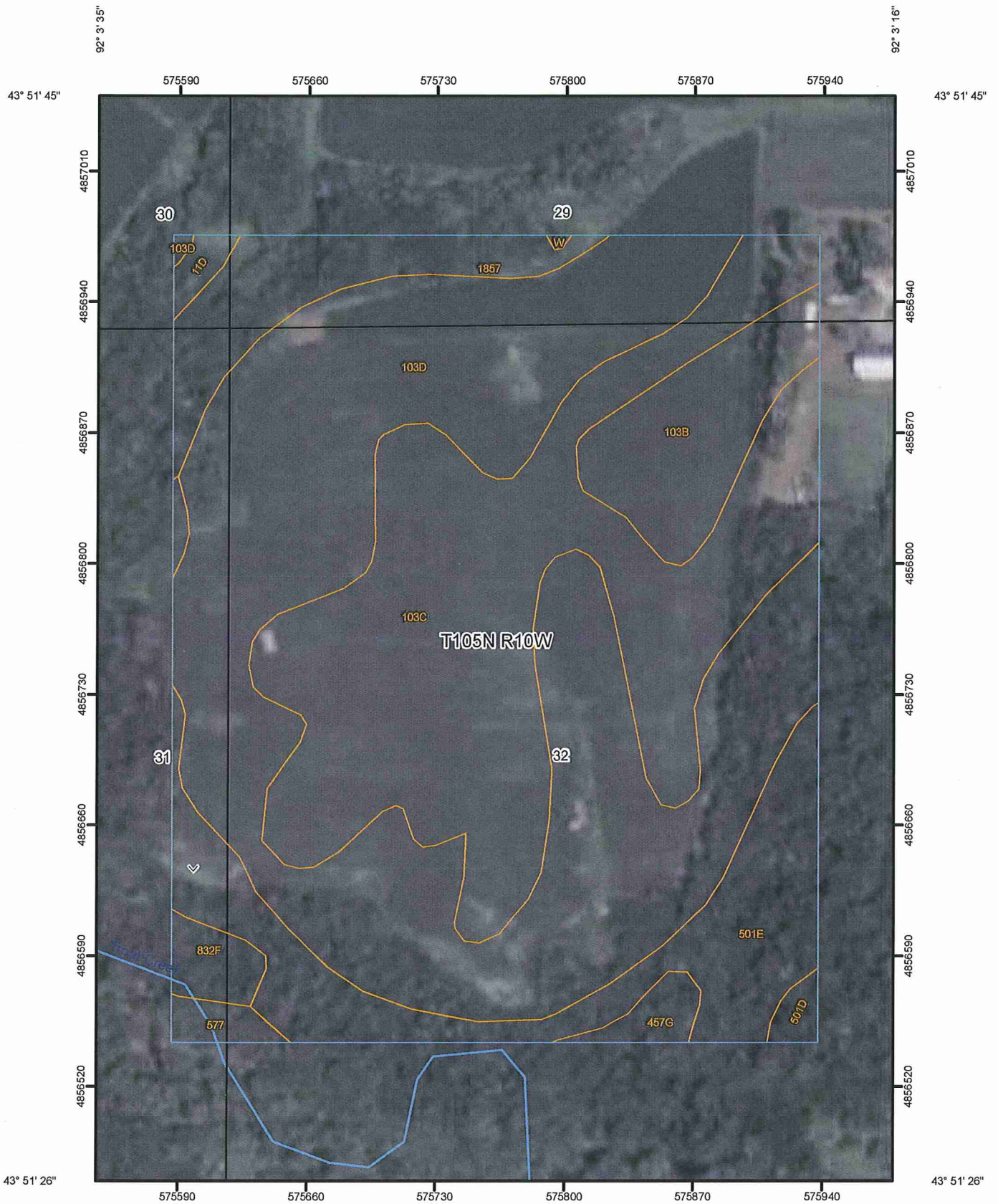
Crop Productivity Index—Winona County, Minnesota



Map Scale: 1:2,770 if printed on A size (8.5" x 11") sheet.



Soil Map—Winona County, Minnesota



Map Scale: 1:2,770 if printed on A size (8.5" x 11") sheet.

